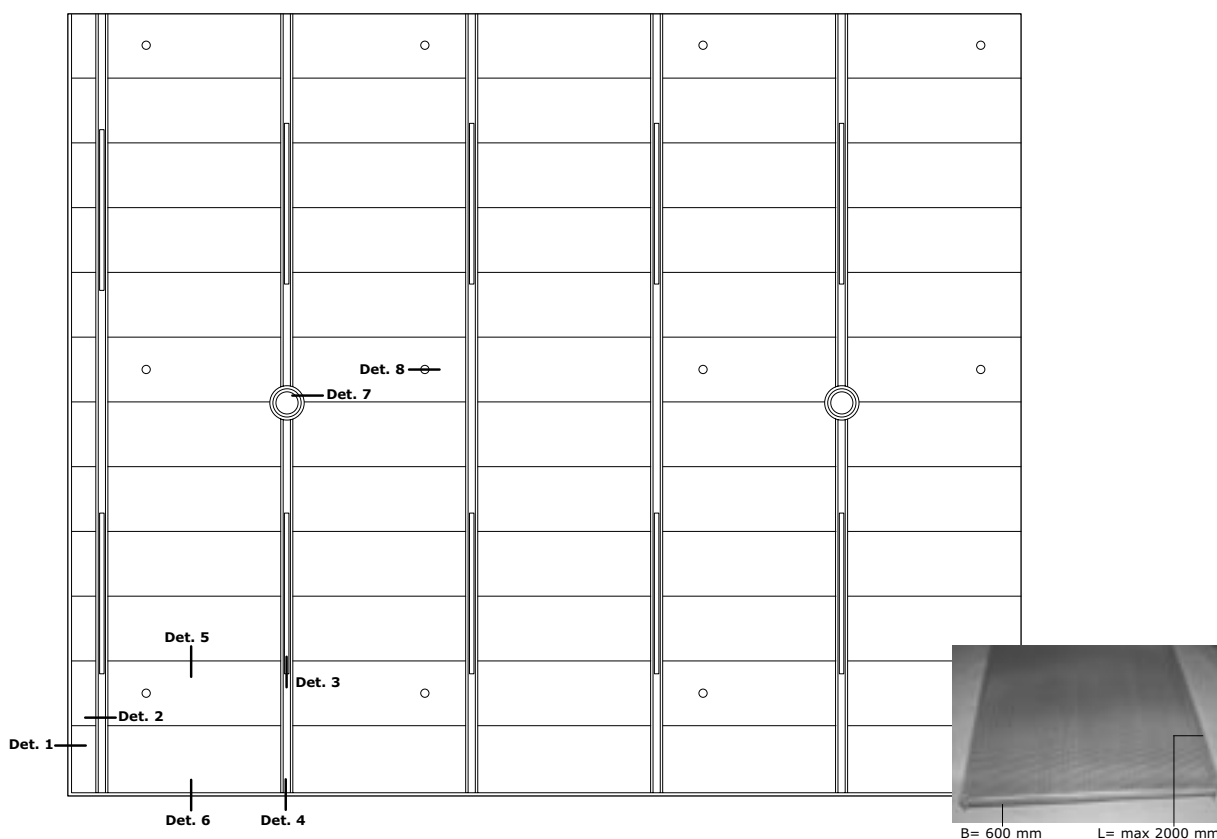
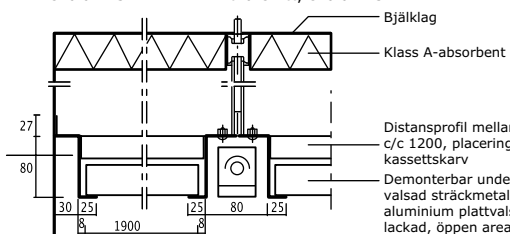


# Itaab Systemtak 200 A

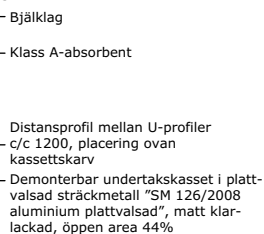
## Monteringsanvisning



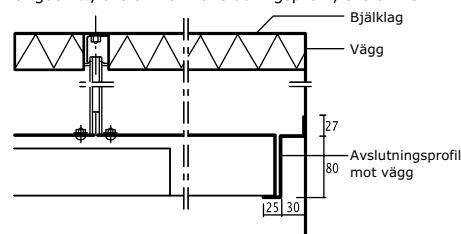
**Det. 1**  
Kantprofil,  
skala 1:5



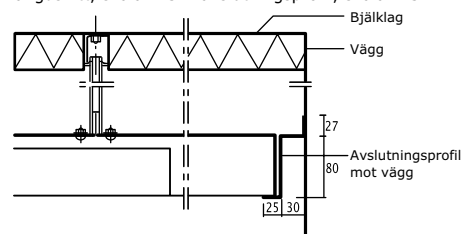
**Det. 2**  
Installationsprofil  
tvärsnitt, skala 1:5



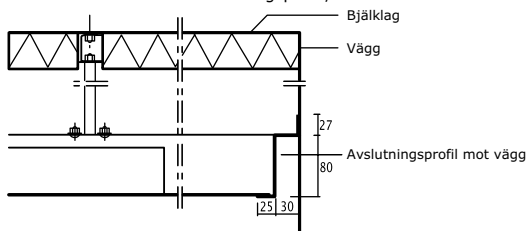
**Det. 3**  
Installationsrännas  
längdsnitt, skala 1:5



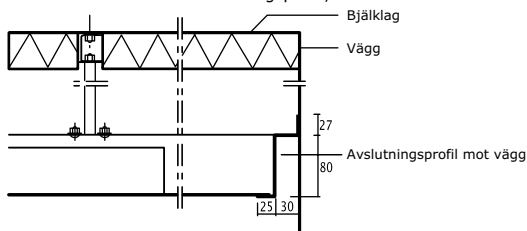
**Det. 4**  
Installationsprofil vid vägg  
avslutningsprofil, skala 1:5



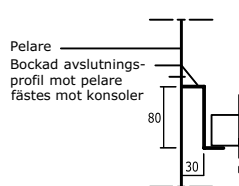
**Det. 5**  
Kassetter tvärsnitt,  
skala 1:5



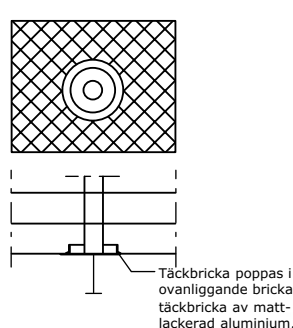
**Det. 6**  
Kassetter vid vägg  
avslutningsprofil, skala 1:5



**Det. 7**  
Anslutning mot pelare,  
skala 1:5



**Det. 8**  
Hål för sprinklerhuvud,  
skala 1:5



Design: Arkitekt Hans Pettersson SandellSandberg

Fortsättning på sidan 2 →



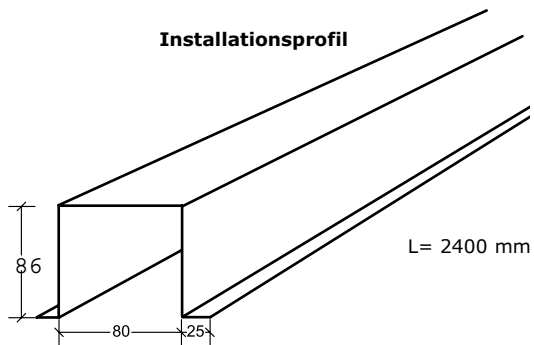
# Itaab Systemtak 200 A Monteringsanvisning

## Ingående detaljer

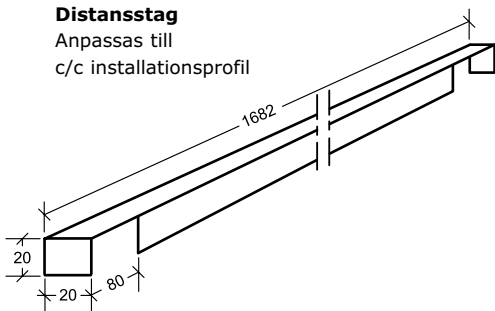
**Kassett 200 A**



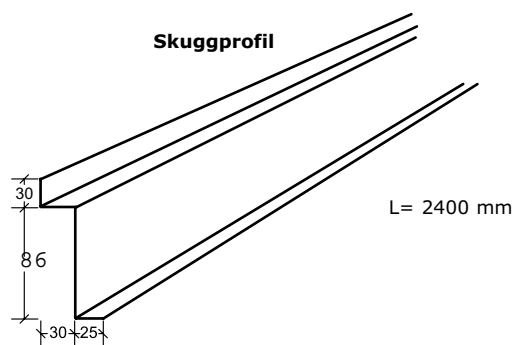
**Installationsprofil**



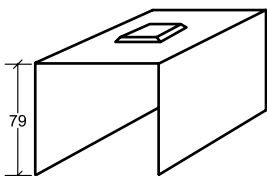
**Distanstag**  
Anpassas till  
c/c installationsprofil



**Skuggprofil**



**Skarv/Bärok**



**Pendel**

Överdel  
**9707**

Sprint  
**9709**

Underdel  
**8675**

