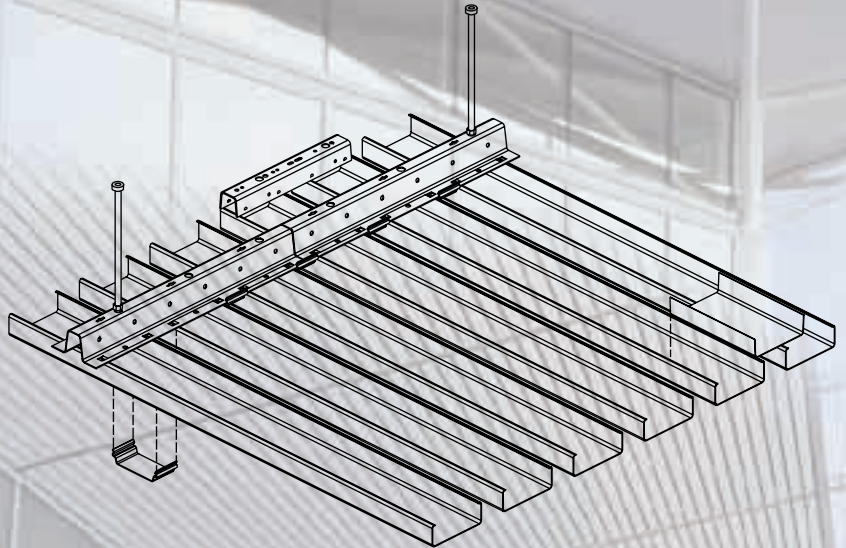
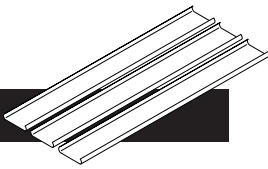


70U EXTERIOR CEILING SYSTEM



EXTERIOR



SYSTEM OVERVIEW EXTERIOR 70U CEILING SYSTEM

SHORT SYSTEM DESCRIPTION

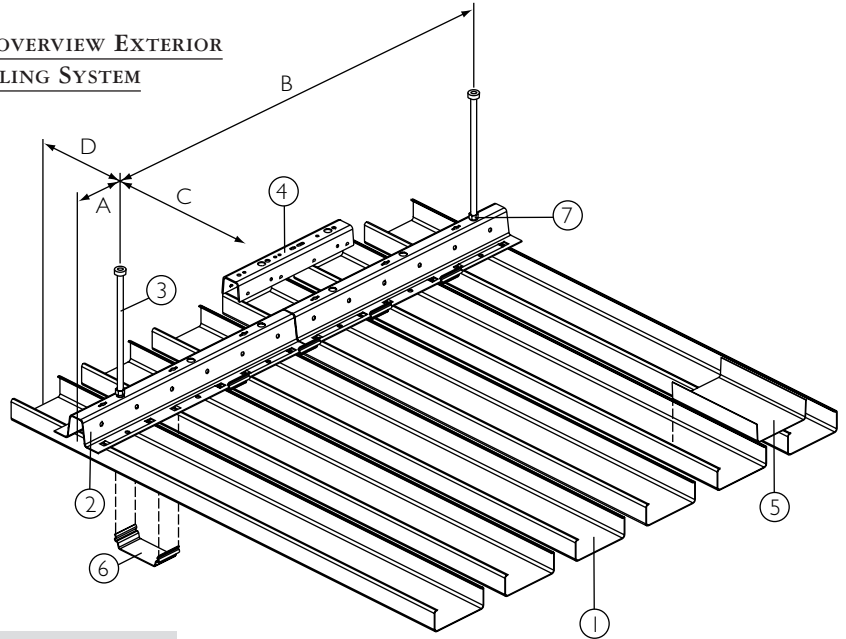
The Luxalon® 70U exterior ceiling system consists of box shaped, 70mm wide, 25 mm deep, 0.8 mm thick aluminium panels (1) which can be easily clipped on a 70U carrier (2). The panels are made to measure and can be supplied in any length up to 6000 mm. Panels can be joined by using the panel splice (5).

Fixing clips (6) are fitted on to the carrier between the panels in order to fully secure the panels under impact.

The panel carrier (2) is black, made of 0.95 mm thick stove enamelled aluminium and is provided with prongs to accommodate the panels in a standard module of 100 mm. Carriers have a standard length of 5000 mm and are connected using the carrier splice (4).

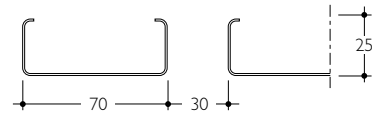
The carriers can be suspended at centres determined by the wind loading graphs (see opposite page) using a rigid levelled suspension system, utilising the washer set (7) to isolate dissimilar metals.

The Luxalon® standard range of aluminium edge profiles can be used as perimeters.



- 1 = 70U panel
- 2 = carrier
- 3 = hanger*
- 4 = carrier splice
- 5 = panel splice
- 6 = panel fixing clip
- 7 = washer set

* Non Luxalon®, carriers are to be fixed to a rigid substructure, using a rigid suspension



MAXIMUM SPANS

Maximum spans of ceiling which are only submitted to windloads:

Panel type	Carrier span (mm) Alu 0.95		Panel span (mm)			
	A	B	on 2 carriers		on 3 or more carriers	
70U	C	D	C	D	C	D
Alu 0.8	1/4 x B max. 300	See graph next page	See graph next page	1/4 x C max. 150	See graph next page	1/4 x C max. 150

PRACTICAL APPLICATIONS

- Panels are made from a corrosion resistant aluminium alloy, which makes the panels strong and excellent resistant to weathering
- Strong and robust panels made of 0.8 mm aluminium provide good resistance against e.g. vandalism.
- The patented Luxacote® finish guarantees colour stability and high resistance against scratches and corrosion
- The panel length, made to measure up to 6000 mm, allows for swift installation and reduces the need for joining the panels to a minimum
- Aluminium panels in combination with aluminium carriers make the system suitable for swimming pools and exterior applications.
- The panels can be easily removed and replaced by hand allowing easy and full access to services and installations in the plenum.
- Flexible carriers are available in order to create a curved ceiling.

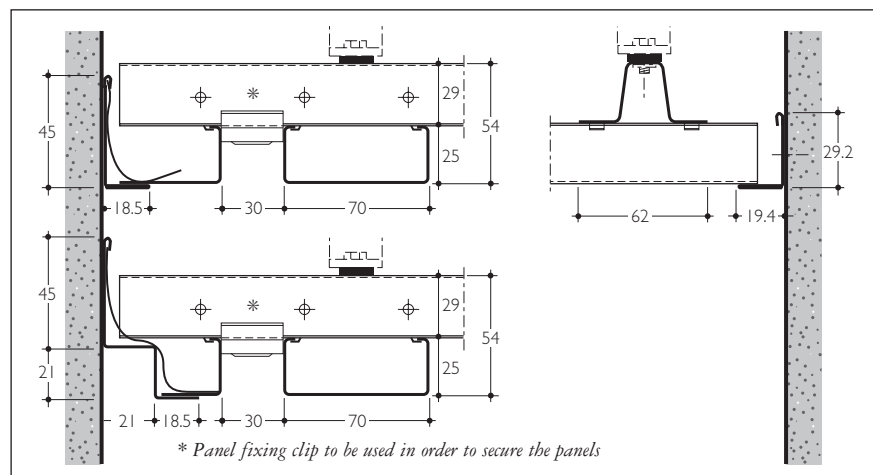
DIMENSIONS & WEIGHTS

Panel	Width (mm)	Height (mm)	Module (mm)	Min. length	Max. length	Weight panels & carriers/m ² *
						Alu. carrier
70U	70	25	100	1000	6000	2.9

* Based on panels installed on 4 or more carriers and a windload (suction) of 1500 N/m² (net weight without subconstruction)

Panels from 250-1000 mm and >6000 mm are available on request.

STANDARD CONSTRUCTION DETAILS



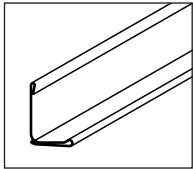
* Panel fixing clip to be used in order to secure the panels

MATERIAL REQUIREMENT PER M²

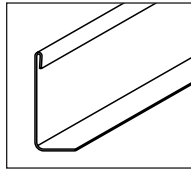
	Unit	70U exterior system
Panels	lm	10
Carriers	lm	1.05
Carrier splice	pcs	0.21
Suspension	pcs	2.44
Locking clips	pcs	10.5

* The required number of components depend on individual project requirements
 Figures are based on a ceiling installed on 3 or more carriers and submitted to a windload (suction) of 1500 N/m².

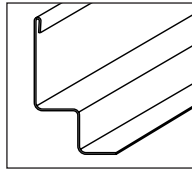
EDGE PROFILES



Wall L-profile alu
(29.2 x 19.4)



Wall L-profile Alu
(45 x 18.5)

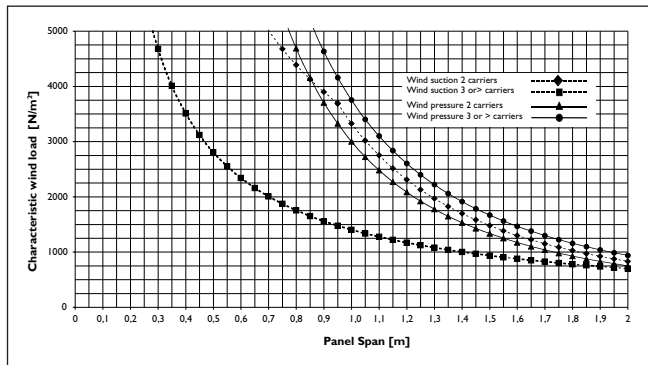


Wall W-profile Alu
(45 x 21 x 21 x 18.5)

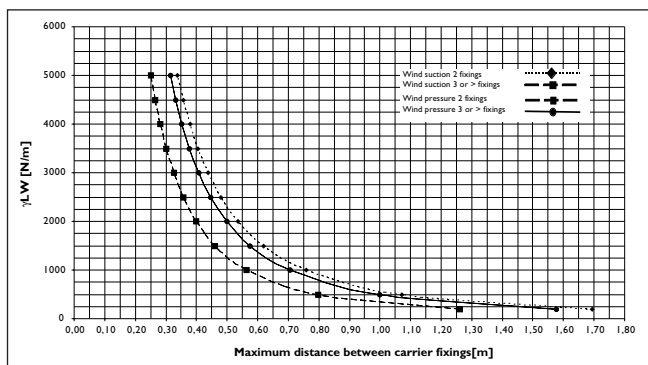
PLENUM ACCESSIBILITY

The Luxalon® 70U system allows for easy demounting of the panels. Installed on a visually hidden suspension system, each panel and clip can be easily removed and replaced by hand allowing easy and full access to services and installations in the plenum.

PANEL SPAN 70U WITH LOCKING CLIP



CARRIER SPAN 70U



MATERIAL SPECIFICATIONS

- BASE MATERIAL

Luxalon® 70U panels are rollformed from 0.8 mm thick pre-painted stove enamelled aluminium strip. All aluminium products can be recycled for the full 100% requiring very little energy. ♻️

- COATING

The tough and durable Luxacote® finish in a nominal thickness of 20 microns, is stove enamelled in a continuous coil-coating process ensuring uniform coating thickness. Luxacote® finish guarantees optimum adhesion and excellent resistance to weathering.

- LUXALON® COLOUR RANGE

The standard Luxalon® colour range includes different colours and finishes. See Luxalon® colour chart. Any other (RAL or NCS) colour is available on request.

MAXIMUM SPANS

- PANEL SPAN (C)

The panel spans, in relation to the wind load (pressure or suction), can be calculated from the graph adjacent.

- WIND LOADS

All Luxalon® Exterior ceilings are tested on resistance to wind loads. Test reports are available on request.

- CARRIER SPAN (B)

Before establishing the fixing distance of the carriers, the load per lineal meter carrier is to be determined by applying one of the following formulas:

Panels installed on:	Calculation of 'load per lineal meter carrier'
2 carriers	0.5 q x panel span (C) in m
3 carriers	1.25 q x panel span (C) in m
4 or more carriers	1.15 q x panel span (C) in m

q = windload in N/m² (uniformly distributed loads)

The carrier span (screw distance) (B) can be read from the graph below in the same way as the panel span.

Note: For corners, roof edges, special designs etc. wind pressure/suction shall be determined with due consideration to the relevant country's local Standard Codes of Building Practice.

LUXALON® EXTERIOR 70U CEILING SYSTEM SPECIFICATION

PART 1. 70U SYSTEM GENERAL

1.1 INTRODUCTION

Supply and fix Luxalon® 70U exterior ceiling system as manufactured by Hunter Douglas Architectural Products.

1.2 DESCRIPTION OF THE SYSTEM

The system will consist of linear box shaped panels fixed to an adjustable suspension system which allows for individual panels to be removed by hand. System to feature open joints between the panels. The suspension system consists of a non-Luxalon® levelled rigid structure. To prevent contact corrosion by applying dissimilar metals, each fixing of the carriers to the sub-construction must be made through the Luxalon® washer set.

PART 2. PRODUCT

_____ m² Luxalon® exterior 70U ceiling, featuring a 30 mm joint and consisting of:

2.1 PANELS

Panels, 70 mm wide, 25 mm deep, to be rollformed from 0.8 mm thick stove enamelled aluminium strip, plain. Optionally acoustic pads can be laid on the panels in order to improve acoustical performance.

Aluminium panels to be manufactured from prepainted, stove enamelled aluminium, corrosion resistant alloy EN-AW-3005 or equivalent (according to EN 1396 and ECCA).

Panels have a length of _____ mm (manufacturer availability 1000-6000 mm and on request 250-1000 mm and > 6000 mm). Panels to be connected in longitudinal direction by means of panel splices.

2.2 SUSPENSION

Rows of 0.95 Alu rollformed carriers shall be installed at _____ centre on centre by means of levelled suspensions of sufficient strength and rigidity to provide resistance to wind pressure/-suction, at a distance of _____, centre on centre. Carriers will be joined by means of carrier splices. Carriers provided with prongs to hold panels in a standard module of 100 mm.

Fixing clips made of prepainted stove enamelled aluminium, clipped on to the panel carrier between the panels in order to secure the panels.

PART 3. ADDITIONAL SPECIFICATIONS

3.1 PERIMETER PROFILES

- Wall L-profile 29.2 x 19.4 mm made of 0.5 mm thick aluminium
- Wall L-profile 45 x 18.5 mm made of 0.8 mm thick aluminium
- Wall W-profile 45 x 21 x 21 x 18.5 mm made of 0.8 mm thick aluminium

3.2 COATING

Architect will make a colour selection from the standard Hunter Douglas colour range for Luxalon® 70U panels code no. _____ or a special colour will be made to match.

The coating will consist of a tough and durable Luxacote® finish in nominal thickness of 20 microns, applied in a continuous coilcoating process ensuring a uniform coating. Luxacote® finish guarantees optimum adhesion and excellent resistance to weathering.

3.3 INSTALLATION

All materials shall be installed in strict compliance with all local codes, ordinances and manufacturers recommendations including specific additional requirements as may be called for in the specifications or shown on the drawings.



LUXALON®
ARCHITECTURAL PRODUCTS

HUNTER DOUGLAS EUROPE B.V.

2, Piekstraat - P.O. Box 5072 - 3008 AB Rotterdam - Tel. 010-4869911 - Fax 010-4847910 - www.luxalon.com

© Registered trademark - a HunterDouglas® product Pats. & Pats. Pend. - Technical data subject to change without notice. MX202H00
© Copyright Hunter Douglas 2004. No rights can be derived from copy, text pertaining to illustrations or samples. Subject to changes in materials, parts, compositions, designs, versions, colours etc., even without notice.

