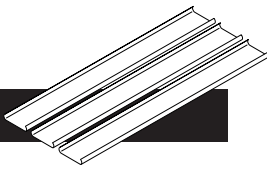


www.luxalon.com





SYSTEM OVERVIEW
EXTERIOR 80B CEILING SYSTEM

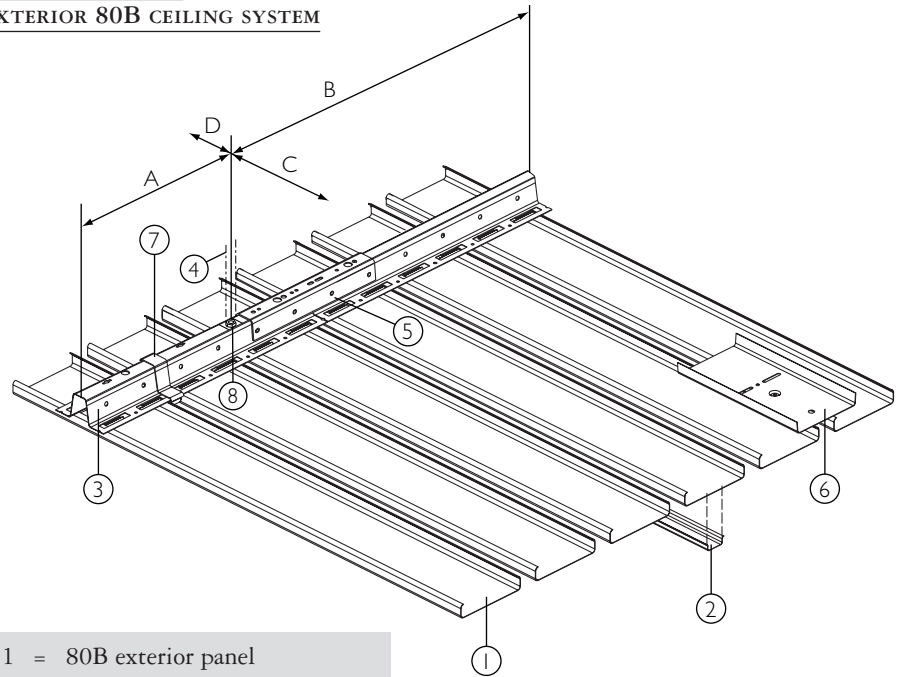
SHORT SYSTEM DESCRIPTION

The Luxalon® exterior 80B ceiling system consists of box shaped, 80 mm wide aluminium panels (1) which can be easily clipped on the 80B carrier (3). The stove enamelled aluminium panels are recycable, lightweight and strong. The panels are made to measure and can be supplied in any length up to 6000 mm. Panels can be joined by using the panel splice (6).

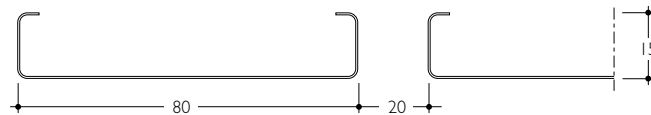
Between the panels there is an open joint of 20 mm, which can be filled with a recessed U-shaped infill profile (2). Fixing clips (7) must be inserted between panels when no infill profiles are used in order to retain the panels.

The carrier (3) is black, made of 0.95 mm thick stove enamelled aluminium and is provided with prongs to accommodate the panels in a module of 100 mm. Carriers have a standard length of 5000 mm and are connected by using the carrier splice (5).

The carriers can be suspended at centres determined by the wind loading graphs (see opposite page) using a rigid levelled suspension system. Utilising the washerset to isolate dissimilar metals.



- 1 = 80B exterior panel
- 2 = recessed U-shaped join profile
- 3 = 80B carrier
- 4 = non Luxalon® rigid suspension
- 5 = carrier splice
- 6 = panel splice
- 7 = fixing clip
- 8 = Washer set



PRACTICAL APPLICATIONS

- Panel length made to measure up to 6000 mm, allowing swift installation and reducing the need for panel joints.
- The panels combined with join profiles provide a visually closed ceiling.
- Panels are made from a corrosion resistant aluminium alloy, which makes the panels strong and resistant to corrosion.
- The panels can be easily removed and replaced by hand, providing full access to services and installations in the plenum.
- The patented Luxacote® coating, guarantees colour stability and high resistance against scratches and corrosion.
- The system is also available for interior applications. See separate brochure.

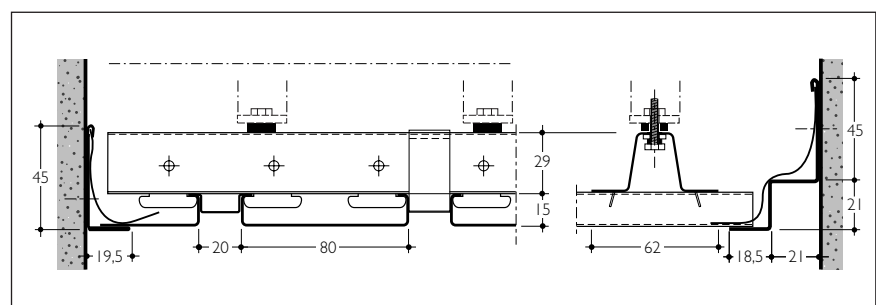
DIMENSIONS & WEIGHTS

Panel	Width	Module	Min. Length	Max. Length	Weight panels & carrier/m ² *
80B	80	100	1000	6000	2.5

* Based on panels installed on 4 or more carriers with an average windload (pressure) of 1500 N/m² (nett weight without subconstruction)

Panels from 250-1000 mm and >6000 mm are available on request.

STANDARD CONSTRUCTION DETAILS



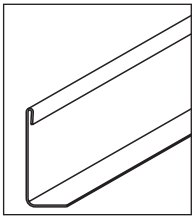
MATERIAL REQUIREMENTS PER M²

	Unit	80B exterior system
Panels	lm	10
U-shaped join profiles	lm	10
Carriers	lm	1.1
Carrier splice	pcs	0.22
Suspension	pcs	2

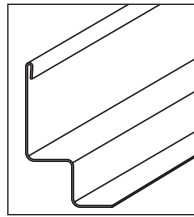
* The required number of components depend on individual project requirements

Figures are based on a ceiling installed on 4 or more carriers and submitted to a windload (pressure) of 1500N/m².

EDGE PROFILES



Wall L-profile Alu
(45 x 18.5)



Wall W-profile Alu
(45 x 21 x 21 x 18.5)

PLENUM ACCESSIBILITY

The Luxalon® exterior 80B system allows for easy demounting of the panels and infills. Installed on a concealed suspension system, each panel and infill can be removed and replaced by hand allowing easy and full access to services and installations in the plenum.

MAXIMUM SPANS

- PANEL SPAN (C)

The panel spans, in relation to the wind load (pressure or suction), can be calculated from the graph adjacent. At 800 N/m² the panel span should be 1250 mm (on 4 or more carriers).

- CARRIER SPAN (B)

Before establishing the fixing distance of the carriers, the load per lineal meter carrier is to be determined by applying one of the following formulas:

Panels installed on:	Calculation of 'load per lineal meter carrier'
2 carriers	$0.5 q \times \text{panel span (C) in m}$
3 carriers	$1.25 q \times \text{panel span (C) in m}$
4 or more carriers	$1.15 q \times \text{panel span (C) in m}$

$q = \text{windload in N/m}^2$ (uniformly distributed loads)

The carrier span (screw distance) (B) can be read from the graph in the same way as the panel span.

Note: For corners, roof edges, special designs etc. wind pressure/suction shall be determined with due consideration to the relevant local country's Standard Codes of Building Practice.

MATERIAL SPECIFICATIONS

- BASE MATERIAL

Luxalon® 80B exterior ceiling panels are rollformed from 0.6 mm thick prepainted stove enamelled aluminium strip, which is corrosion resistant. All aluminium products can be recycled for the full 100% requiring very little energy.

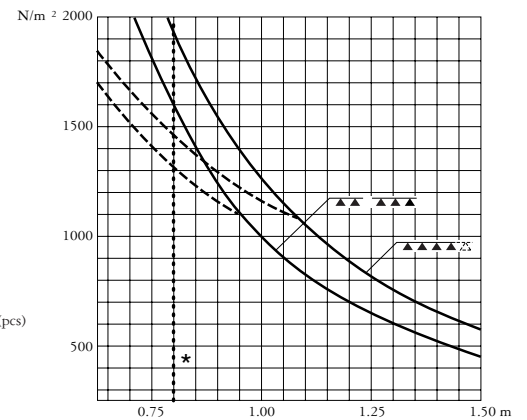
- COATING

The tough and durable Luxacote® finish in a nominal thickness of approximately 20 microns, is stove enamelled in a continuous coil-coating process ensuring colour stability. Luxacote® finish guarantees optimum adhesion and excellent resistance to weathering.

- LUXALON® COLOUR RANGE

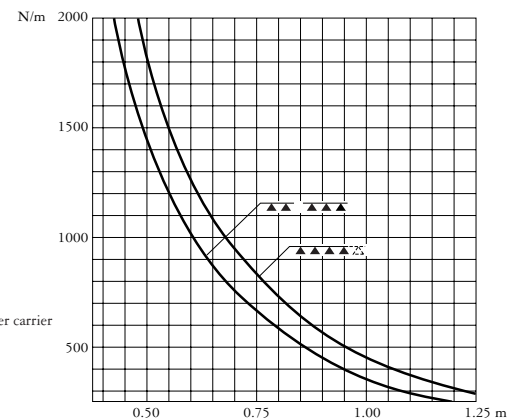
The standard Luxalon® colour range for 80B exterior ceilings includes different colours and finishes. See Luxalon® exterior colour chart. Any other (RAL or NCS) colour is available on request.

PANEL SPAN



* When join profiles are used the max. admissible panelspan is 800 mm, irrespective to the windload

CARRIER SPAN



LUXALON® EXTERIOR 80B CEILING SYSTEM SPECIFICATION

PART 1. EXTERIOR 80B CEILING SYSTEM GENERAL

1.1 INTRODUCTION

Supply and fix Luxalon® exterior 80B ceiling system as manufactured by Hunter Douglas Architectural Products.

1.2 DESCRIPTION OF THE SYSTEM

The system will consist of box shaped linear panels fixed to a rigid suspension system, which allows for individual panels to be removed by hand. The suspension system consists of a non-Luxalon® supporting structure. To prevent contact corrosion by applying dissimilar metals each fixing of the carriers to the subconstruction must be made through the Luxalon® washer set.

PART 2. PRODUCT

_____ m² Luxalon® Exterior 80B Ceiling, consisting of:

2.1 PANELS

80B, size 80 x 15mm manufactured from 0.6 mm aluminium.

Panels to be manufactured from painted, stove enamelled aluminium, corrosion resistant alloy EN-AW-3005 or equivalent (according to EN 1396 and ECCA). Panels have a length of _____ mm (manufacturer availability 1000-6000 mm and on request 250-1000 mm and > 6000 mm). Panels to be coupled in longitudinal direction by means of panel splices.

2.2 SUSPENSION

Rows of 0.95 mm aluminium rollformed carriers shall be installed at _____ centre on centre by means of a levelled suspension of sufficient strength and rigidity to provide resistance to wind pressure/-suction at a distance of _____, centre on centre. Carriers will be joined by means of carrier splices. Carriers provided with prongs to hold panels and infills with a total module of 100 mm.

PART 3. ADDITIONAL SPECIFICATIONS

3.1 PERIMETER PROFILES

- Wall L-profile 45 x 18.5 mm made of 0.8 mm thick aluminium
- Wall W-profile 45 x 21 x 21 x 18.5 mm made of 0.8 mm thick aluminium

3.2 COATING

Architect will make a colour selection from the standard Hunter Douglas colour range for Luxalon® exterior 80B panels code no. _____ or a special colour will be made to match.

The coating will consist of a tough and durable Luxacote® finish in a nominal thickness of approximately 20 microns, applied in a continuous coilcoating process ensuring colour stability. Luxacote® finish guarantees optimum adhesion and excellent resistance to weathering

3.3 INSTALLATION

All materials shall be installed in strict compliance with all local codes, ordinances and manufacturers recommendations including specific additional requirements as may be called for in the specifications or shown on the drawings.



LUXALON® CEILING SYSTEMS

Unit 7 & 8 Keys Business Park - Keys Park Road - Hednesford - WS12 5GW

Tel. (01543) 273620 - Fax (01543) 270084 - e-mail: luxalon-ceilings@hunter-douglas.co.uk - www.luxalon.com

©Registered trademark - a HunterDouglas® product Pats. & Pats. Pend. - Technical data subject to change without notice. MX243Q00
©Copyright HunterDouglas® 2003. No rights can be derived from copy, text pertaining to illustrations or samples. Subject to changes in materials, parts, compositions, designs, versions, colours etc., even without notice.

LUXALON®
ARCHITECTURAL PRODUCTS

